



■ Tam bandajlama (Full bandage)  
 ▨ 5-6 mm aralıklı bandajlama (5-6mm intermitent bandage)

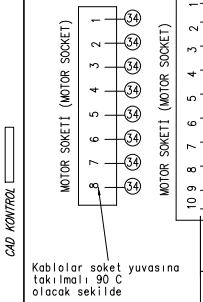
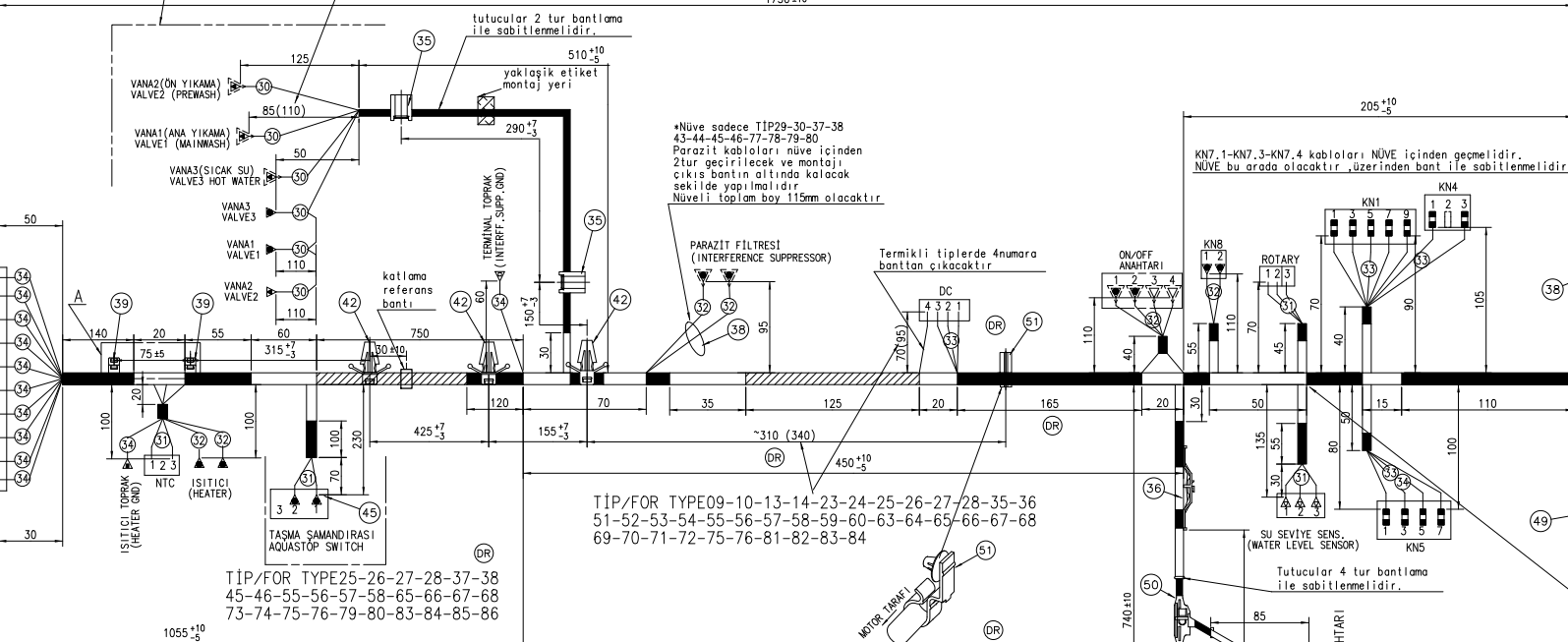
TİP/FOR TYPE07-09-13-21-27-29-37-39

41-43-45-51-57-63-69-83-85 (DR)

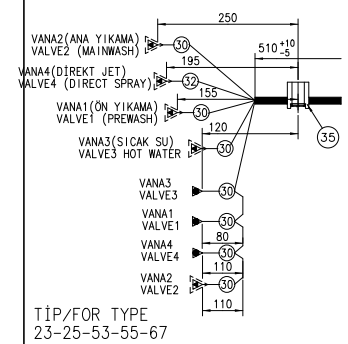
TİP/FOR TYPE41-43-45-85

1730±10

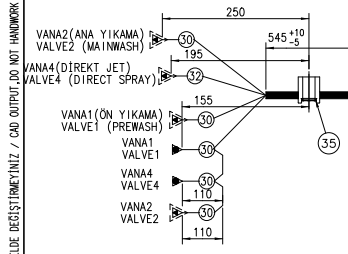
TİP/FOR TYPE07-08-09-10-13-14-21-22-23-24-25-26-27-28-29-30-35-36-37-38-39-40-41-42-43-44-45-46-51-52-53-54-55-56-57-58-59-60-61-62-63-64-65-66-67-68-69-70-71-72-73-74-75-76-77-78-79-80-81-82-83-84-85-86 (DR)



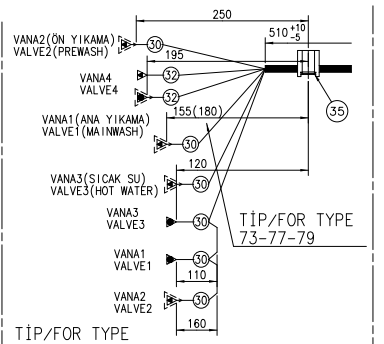
Kablolar soket yuvasına takılmalı, 90 C olacak şekilde



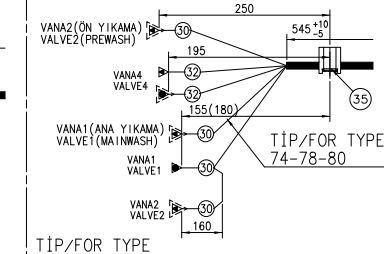
TİP/FOR TYPE 23-25-53-55-67



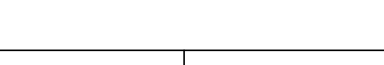
TİP/FOR TYPE 24-26-54-56-68



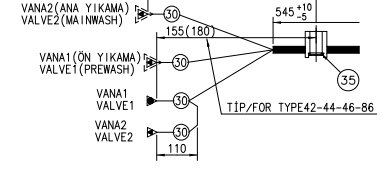
TİP/FOR TYPE 35-59-61-65-71-73-75-77-81



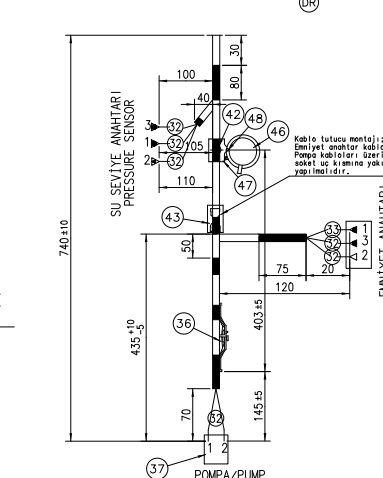
TİP/FOR TYPE 74-78-80



TİP/FOR TYPE 36-60-62-66-72-74-76-78-82



TİP/FOR TYPE42-44-46-86



TİP/FOR TYPE08-10-14-22-28-30-38-40-42-44-46-52-58-64-70-84-86



TİP/FOR TYPE35-36-71-72

\*Nüve sadece TIP29-30-37-38 43-44-45-46-77-78-79-80 Parazit kabloları nüve için 2tur geçirilecek ve montajı çıkış bantın altında kalacak şekilde yapılmalıdır. Nüveli toplam boy 15mm olacaktır.

PARAZİT FİLTRESİ (INTERFERENCE SUPPRESSOR)

Termikli tiplerde 4numara banttan çıkacaktır

TİP/FOR TYPE09-10-13-14-23-24-25-26-27-28-35-36 51-52-53-54-55-56-57-58-59-60-63-64-65-66-67-68 69-70-71-72-75-76-81-82-83-84

TAKILIS YONU

KN7.1-KN7.3-KN7.4 kabloları NÜVE için geçmelidir. NÜVE bu arada olacaktır, üzerinden bant ile sabitlenmelidir.

ON/OFF ANAHTARI

ROTARY

SU SEVİYE SENS. (WATER LEVEL SENSOR)

Tutucular 4 tur bantlama ile sabitlenmelidir.

POMPA/PUMP

SU SEVİYE ANAHTARI PRESSURE SENSOR

EMNİYET ANAHTARI (DOOR LOCK)

POMPA/PUMP

TİP/FOR TYPE 59-60-61-62-65-66 73-74-75-76-77-78 79-80-81-82

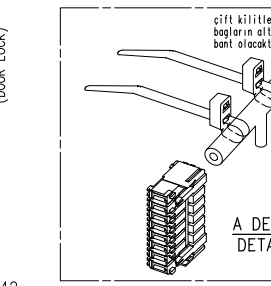
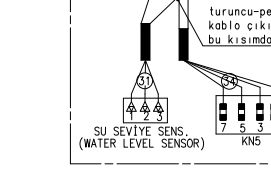
TİP/FOR TYPE 59-60-61-62-65-66 73-74-75-76-77-78 79-80-81-82

Nüvesiz tiplerde bandaj atılacak

Nüvesiz tiplerde bandaj atılacak

\*TIP25-26-27-28-37-38-45-46-55-56 57-58-65-66-67-68-73-74-75-76-79-80 83-84 için KN2 soketine nüve takılacaktır. \*Tüm kablolar nüve için geçmelidir \*Nüve soket tarafından bant ile sabitlenmelidir.

Samandıralı tiplerdeki çıkış detayı



A DETAYI DETAILA

02/01 Tip Malzeme Renk Standart Ölçü		arçelik		MALZEME/MATERIAL	
TARİH	İSİM	ANA KABLO GR			
13.01.2009	ÖZLEM	MAIN CABLE HARNESS			
13.01.2009	FARUK	TRVO/1/2/MED/UN-JUNOR-COMP.			
13.01.2009	PARMAKSIZ	DIFFUSION/FUSION MINI LCD			
TOLERANS		KONTROL		RESİM NO.	
Verilmeyen Ölçü (DIN)		No.Sınıflı Komp.Sıra No		Tip İst. Değ.	
+10 / -5		287580XX00		Sayı: 2	
YERİNE GEÇTİ		YERİNE GEÇTİ		YERİNE GEÇTİ	



RESİM ÜZERİNDEKİ ÖLÇÜ ALMAYINIZ / DO NOT SCALE

CAD KONTROL

CAD İLE ÇİZİLMİŞTİR BELGE DEĞİŞTİRİLMİYİZ / CAD OUTPUT DO NOT HANDWORK

TIP/TYPE		YERİ ve RENĞİ	LOCATION AND COLOUR
00	(KNS.1-VAN3-VAN2-VAN1) 0,35m2 BEYAZ (KNS.3-VAN1) 0,35m2 MAVİ (KNS.4-VAN2) 0,35m2 PEMBE (KNS.5-VAN3) 0,35m2 KIRMIZI	(KNS.1-VALVE3-VALVE1) 0,35m2 WHITE (KNS.3-VALVE1) 0,35m2 BLUE (KNS.4-VALVE2) 0,35m2 PINK (KNS.4-VALVE3) 0,35m2 RED	
01	(KNS.1-VAN2-VAN1) 0,35m2 BEYAZ (KNS.3-VAN1) 0,35m2 MAVİ (KNS.4-VAN2) 0,35m2 PEMBE	(KNS.1-VALVE2-VALVE1) 0,35m2 WHITE (KNS.3-VALVE1) 0,35m2 BLUE (KNS.4-VALVE2) 0,35m2 PINK	
3004	(KNS.1-VAN3-VAN1-VAN4-VAN2) 0,35m2 BEYAZ (KNS.3-VAN1) 0,35m2 MAVİ (KNS.4-VAN2) 0,35m2 PEMBE (KNS.5-VAN3) 0,35m2 KIRMIZI	(KNS.1-VALVE3-VALVE1-VALVE4-VALVE2) 0,35m2 WHITE (KNS.3-VALVE1) 0,35m2 BLUE (KNS.4-VALVE2) 0,35m2 PINK (KNS.4-VALVE3) 0,35m2 RED	
3005	(KNS.1-VAN1-VAN4-VAN2) 0,35m2 BEYAZ (KNS.3-VAN1) 0,35m2 MAVİ (KNS.4-VAN2) 0,35m2 PEMBE	(KNS.1-VALVE1-VALVE4-VALVE2) 0,35m2 WHITE (KNS.3-VALVE1) 0,35m2 BLUE (KNS.4-VALVE2) 0,35m2 PINK	
3100	(KNS.2-ROTARY.1) 0,35m2 MAVİ (KNS.2-ROTARY.2) 0,35m2 GRİ (KNS.2-ROTARY.3) 0,35m2 GRAY (KNS.2-SSS.1) 0,35m2 PEMBE (KNS.2-SSS.2) 0,35m2 TURUNCU (KNS.2-SSS.3) 0,35m2 BEYAZ (KNS.2-NTC.1) 0,35m2 YEŞİL (KNS.2-NTC.2) 0,35m2 YEŞİL	(KNS.2-ROTARY.1) 0,35m2 BLUE (KNS.2-ROTARY.2) 0,35m2 GRAY (KNS.2-ROTARY.3) 0,35m2 BLACK (KNS.2-WATER LEVEL SENSOR.2) 0,35m2 PINK (KNS.2-WATER LEVEL SENSOR.1) 0,35m2 ORANGE (KNS.2-WATER LEVEL SENSOR.3) 0,35m2 WHITE (KNS.2-NTC.1) 0,35m2 GREEN (KNS.2-NTC.2) 0,35m2 GREEN	
3101	(KNS.2-ROTARY.1) 0,35m2 MAVİ (KNS.2-ROTARY.2) 0,35m2 GRİ (KNS.2-ROTARY.3) 0,35m2 GRAY (KNS.2-TASMA SAMANDIRASI-1-SSS.2) 0,35m2 PEMBE (KNS.2-TASMA SAMANDIRASI-2-SSS.1) 0,35m2 TURUNCU (KNS.2-SSS.3) 0,35m2 BEYAZ (KNS.2-NTC.1) 0,35m2 YEŞİL (KNS.2-NTC.2) 0,35m2 YEŞİL	(KNS.2-ROTARY.1) 0,35m2 BLUE (KNS.2-ROTARY.2) 0,35m2 GRAY (KNS.2-ROTARY.3) 0,35m2 BLACK (KNS.2-AQUASTOP SWITCH-1-WATER LEVEL SENSOR.2) 0,35m2 PINK (KNS.2-AQUASTOP SWITCH-2-WATER LEVEL SENSOR.1) 0,35m2 ORANGE (KNS.2-WATER LEVEL SENSOR.3) 0,35m2 WHITE (KNS.2-NTC.1) 0,35m2 GREEN (KNS.2-NTC.2) 0,35m2 GREEN	
3201	(KNT.4-EMN.AN.1) MOR-SARI (KNT.1-ON/OFF.3) YEŞİL-MAVİ (KNT.3-EMN.AN.3) 1,00m2 TURUNCU (KNT.4-HEATER.1) 1,00m2 KIRMIZI (KNT.6-PANPA) 0,50m2 MOR (KNS.1-ISTITICI.1) 1,00m2 GRİ (KNS.2-EMN.AN.2) 1,00m2 KIRMIZI (EMN.AN.2-PANPA) 0,50m2 KIRMIZI (PAR.FILT.-ON/OFF.1) 1,00m2 GRİ (PAR.FILT.-ON/OFF.2) 1,00m2 GRİ	(KNT.4-DOOR LOCK.1) PURPLE-YELLOW (KNT.1-ON/OFF.3) GREEN-BLUE (ON/OFF.3-DOOR LOCK.3) 1,00m2 ORANGE (KNT.3-ON/OFF.4) RED-WHITE (KNT.4-HEATER.1) 1,00m2 RED (KNT.6-PANPA) 0,50m2 PURPLE (KNS.1-HEATER.1) 1,00m2 GREY (KNS.2-DOOR LOCK.2) 1,00m2 RED (DOOR LOCK.2-PANPA) 0,50m2 RED (INTERFERENCE SUPPRESSOR-ON/OFF.1) 1,00m2 GRAY (INTERFERENCE SUPPRESSOR-ON/OFF.2) 1,00m2 GRAY	
3202	(KNT.4-EMN.AN.1) MOR-SARI (KNT.1-ON/OFF.3) YEŞİL-MAVİ (KNT.3-EMN.AN.3) 1,00m2 TURUNCU (KNT.4-HEATER.1) 1,00m2 KIRMIZI (KNT.6-PANPA) 0,50m2 MOR (KNS.1-ISTITICI.1) 1,00m2 GRİ (KNS.2-EMN.AN.2) 1,00m2 KIRMIZI (EMN.AN.2-PANPA) 0,50m2 KIRMIZI (PAR.FILT.-ON/OFF.1) 1,00m2 GRİ (PAR.FILT.-ON/OFF.2) 1,00m2 GRİ	(KNT.4-DOOR LOCK.1) PURPLE-YELLOW (KNT.1-ON/OFF.3) GREEN-BLUE (ON/OFF.3-DOOR LOCK.3) 1,00m2 ORANGE (KNT.3-ON/OFF.4) RED-WHITE (KNT.4-HEATER.1) 1,00m2 RED (KNT.6-PANPA) 0,50m2 PURPLE (KNS.1-HEATER.1) 1,00m2 GREY (KNS.2-DOOR LOCK.2) 1,00m2 RED (DOOR LOCK.2-PANPA) 0,50m2 RED (INTERFERENCE SUPPRESSOR-ON/OFF.1) 1,00m2 GRAY (INTERFERENCE SUPPRESSOR-ON/OFF.2) 1,00m2 GRAY	
3203	(KNT.4-EMN.AN.1) MOR-SARI (KNT.1-ON/OFF.3) YEŞİL-MAVİ (KNT.3-EMN.AN.3) 1,00m2 TURUNCU (KNT.4-HEATER.1) 1,00m2 KIRMIZI (KNT.6-PANPA) 0,50m2 MOR (KNS.1-ISTITICI.1) 1,00m2 GRİ (KNS.2-EMN.AN.2) 1,00m2 KIRMIZI (EMN.AN.2-PANPA) 0,50m2 KIRMIZI (PAR.FILT.-ON/OFF.1) 1,00m2 GRİ (PAR.FILT.-ON/OFF.2) 1,00m2 GRİ	(KNT.4-DOOR LOCK.1) PURPLE-YELLOW (KNT.1-ON/OFF.3) GREEN-BLUE (ON/OFF.3-DOOR LOCK.3) 1,00m2 ORANGE (KNT.3-ON/OFF.4) RED-WHITE (KNT.4-HEATER.1) 1,00m2 RED (KNT.6-PANPA) 0,50m2 PURPLE (KNS.1-HEATER.1) 1,00m2 GREY (KNS.2-DOOR LOCK.2) 1,00m2 RED (DOOR LOCK.2-PANPA) 0,50m2 RED (INTERFERENCE SUPPRESSOR-ON/OFF.1) 1,00m2 GRAY (INTERFERENCE SUPPRESSOR-ON/OFF.2) 1,00m2 GRAY	
3204	(KNT.4-EMN.AN.1) MOR-SARI (KNT.1-ON/OFF.3) YEŞİL-MAVİ (KNT.3-EMN.AN.3) 1,00m2 TURUNCU (KNT.4-HEATER.1) 1,00m2 KIRMIZI (KNT.6-PANPA) 0,50m2 MOR (KNS.1-ISTITICI.1) 1,00m2 GRİ (KNS.2-EMN.AN.2) 1,00m2 KIRMIZI (EMN.AN.2-PANPA) 0,50m2 KIRMIZI (PAR.FILT.-ON/OFF.1) 1,00m2 GRİ (PAR.FILT.-ON/OFF.2) 1,00m2 GRİ	(KNT.4-DOOR LOCK.1) PURPLE-YELLOW (KNT.1-ON/OFF.3) GREEN-BLUE (ON/OFF.3-DOOR LOCK.3) 1,00m2 ORANGE (KNT.3-ON/OFF.4) RED-WHITE (KNT.4-HEATER.1) 1,00m2 RED (KNT.6-PANPA) 0,50m2 PURPLE (KNS.1-HEATER.1) 1,00m2 GREY (KNS.2-DOOR LOCK.2) 1,00m2 RED (DOOR LOCK.2-PANPA) 0,50m2 RED (INTERFERENCE SUPPRESSOR-ON/OFF.1) 1,00m2 GRAY (INTERFERENCE SUPPRESSOR-ON/OFF.2) 1,00m2 GRAY	
3205	(KNT.4-EMN.AN.1) MOR-SARI (KNT.1-ON/OFF.3) YEŞİL-MAVİ (KNT.3-EMN.AN.3) 1,00m2 TURUNCU (KNT.4-HEATER.1) 1,00m2 KIRMIZI (KNT.6-PANPA) 0,50m2 MOR (KNS.1-ISTITICI.1) 1,00m2 GRİ (KNS.2-EMN.AN.2) 1,00m2 KIRMIZI (EMN.AN.2-PANPA) 0,50m2 KIRMIZI (PAR.FILT.-ON/OFF.1) 1,00m2 GRİ (PAR.FILT.-ON/OFF.2) 1,00m2 GRİ	(KNT.4-DOOR LOCK.1) PURPLE-YELLOW (KNT.1-ON/OFF.3) GREEN-BLUE (ON/OFF.3-DOOR LOCK.3) 1,00m2 ORANGE (KNT.3-ON/OFF.4) RED-WHITE (KNT.4-HEATER.1) 1,00m2 RED (KNT.6-PANPA) 0,50m2 PURPLE (KNS.1-HEATER.1) 1,00m2 GREY (KNS.2-DOOR LOCK.2) 1,00m2 RED (DOOR LOCK.2-PANPA) 0,50m2 RED (INTERFERENCE SUPPRESSOR-ON/OFF.1) 1,00m2 GRAY (INTERFERENCE SUPPRESSOR-ON/OFF.2) 1,00m2 GRAY	
3206	(KNT.4-EMN.AN.1) MOR-SARI (KNT.1-ON/OFF.3) YEŞİL-MAVİ (KNT.3-EMN.AN.3) 1,00m2 TURUNCU (KNT.4-HEATER.1) 1,00m2 KIRMIZI (KNT.6-PANPA) 0,50m2 MOR (KNS.1-ISTITICI.1) 1,00m2 GRİ (KNS.2-EMN.AN.2) 1,00m2 KIRMIZI (EMN.AN.2-PANPA) 0,50m2 KIRMIZI (PAR.FILT.-ON/OFF.1) 1,00m2 GRİ (PAR.FILT.-ON/OFF.2) 1,00m2 GRİ	(KNT.4-DOOR LOCK.1) PURPLE-YELLOW (KNT.1-ON/OFF.3) GREEN-BLUE (ON/OFF.3-DOOR LOCK.3) 1,00m2 ORANGE (KNT.3-ON/OFF.4) RED-WHITE (KNT.4-HEATER.1) 1,00m2 RED (KNT.6-PANPA) 0,50m2 PURPLE (KNS.1-HEATER.1) 1,00m2 GREY (KNS.2-DOOR LOCK.2) 1,00m2 RED (DOOR LOCK.2-PANPA) 0,50m2 RED (INTERFERENCE SUPPRESSOR-ON/OFF.1) 1,00m2 GRAY (INTERFERENCE SUPPRESSOR-ON/OFF.2) 1,00m2 GRAY	
3300	(KNS.7-DC.4) GRİ-BEYAZ (KNS.5-DC.3) MAVİ-BEYAZ (KNS.3-DC.2) YEŞİL-KIRMIZI (KNS.1-DC.1) KIRMIZI-BEYAZ	(KNS.7-DC.4) GRAY-WHITE (KNS.5-DC.3) BLUE-WHITE (KNS.3-DC.2) GREEN-RED (KNS.1-DC.1) RED-WHITE	
3301	(KNS.5-DC.3) MAVİ-BEYAZ (KNS.3-DC.2) YEŞİL-KIRMIZI (KNS.1-DC.1) KIRMIZI-BEYAZ	(KNS.5-DC.3) BLUE-WHITE (KNS.3-DC.2) GREEN-RED (KNS.1-DC.1) RED-WHITE	
3400	(KNI.1-MOTOR1) KAHVE-BEYAZ (KNI.3-MOTOR2) MOR-BEYAZ (KNI.5-MOTOR3) KIRMIZI-BEYAZ (KNI.7-MOTOR4) MOR-SARI (KNI.8-MOTOR5) YEŞİL-KIRMIZI (KNI.4-MOTOR6) 0,50m2 YEŞİL (MOTORB-ISTITICI TOP.-TERMINAL TOP.) YEŞİL-SARI	(KNI.1-MOTOR1) BROWN-WHITE (KNI.3-MOTOR2) PURPLE-WHITE (KNI.5-MOTOR3) RED-WHITE (KNI.7-MOTOR4) PURPLE-YELLOW (KNI.8-MOTOR5) GREEN-RED (KNI.4-MOTOR6) 0,50m2 GREEN (MOTORB-HEATER QND-INT.SUPP.QND) GREEN-YELLOW	
3401	(KNI.3-MOTOR2) MOR-BEYAZ (KNI.5-MOTOR3) KIRMIZI-BEYAZ (KNI.1-MOTOR1) MOR-SARI (KNI.8-MOTOR5) YEŞİL-KIRMIZI (KNI.4-MOTOR6) 0,50m2 YEŞİL (KNI.7-MOTOR4) 0,50m2 YEŞİL (MOTORB-ISTITICI TOP.-TERMINAL TOP.) YEŞİL-SARI	(KNI.3-MOTOR2) PURPLE-WHITE (KNI.5-MOTOR3) RED-WHITE (KNI.1-MOTOR1) PURPLE-YELLOW (KNI.8-MOTOR5) GREEN-RED (KNI.4-MOTOR6) 0,50m2 GREEN (KNI.7-MOTOR4) 0,50m2 GREEN (MOTORB-HEATER QND-INT.SUPP.QND) GREEN-YELLOW	
3402	(KNS.7-MOTOR0) BEYAZ TURUNCU (KNI.1-MOTOR1) KAHVE-BEYAZ (KNI.3-MOTOR2) MOR-BEYAZ (KNI.5-MOTOR3) KIRMIZI-BEYAZ (KNI.7-MOTOR4) MOR-SARI (KNI.8-MOTOR5) YEŞİL-KIRMIZI (KNI.4-MOTOR6) 0,50m2 YEŞİL (MOTORB-ISTITICI TOP.-TERMINAL TOP.) YEŞİL-SARI	(KNS.7-MOTOR0) WHITE-ORANGE (KNI.1-MOTOR1) BROWN-WHITE (KNI.3-MOTOR2) PURPLE-WHITE (KNI.5-MOTOR3) RED-WHITE (KNI.7-MOTOR4) PURPLE-YELLOW (KNI.8-MOTOR5) GREEN-RED (KNI.4-MOTOR6) 0,50m2 GREEN (MOTORB-HEATER QND-INT.SUPP.QND) GREEN-YELLOW	
3403	(KNS.7-MOTOR0) BEYAZ TURUNCU (KNI.1-MOTOR1) KAHVE-BEYAZ (KNI.3-MOTOR2) MOR-BEYAZ (KNI.5-MOTOR3) KIRMIZI-BEYAZ (KNI.7-MOTOR4) MOR-SARI (KNI.8-MOTOR5) YEŞİL-KIRMIZI (KNI.4-MOTOR6) 0,50m2 YEŞİL (MOTORB-ISTITICI TOP.-TERMINAL TOP.) YEŞİL-SARI	(KNS.7-MOTOR0) WHITE-ORANGE (KNI.1-MOTOR1) BROWN-WHITE (KNI.3-MOTOR2) PURPLE-WHITE (KNI.5-MOTOR3) RED-WHITE (KNI.7-MOTOR4) PURPLE-YELLOW (KNI.8-MOTOR5) GREEN-RED (KNI.4-MOTOR6) 0,50m2 GREEN (MOTORB-HEATER QND-INT.SUPP.QND) GREEN-YELLOW	
3404	(KNI.3-MOTOR2) 0,50m2 PEMBE (KNI.1-MOTOR1) 0,50m2 KIRMIZI (KNI.7-MOTOR4) 0,50m2 MOR (KNI.8-MOTOR5) 0,50m2 TURUNCU (KNI.4-MOTOR6) 0,50m2 YEŞİL (MOTORB-ISTITICI TOP.-TERMINAL TOP.) YEŞİL-SARI	(KNI.3-MOTOR2) 0,50m2 PINK (KNI.1-MOTOR1) 0,50m2 RED (KNI.7-MOTOR4) 0,50m2 ORANGE (KNI.8-MOTOR5) 0,50m2 GREEN (KNI.4-MOTOR6) 0,50m2 GREEN (MOTORB-HEATER QND-INT.SUPP.QND) GREEN-YELLOW	
3405	(KNI.1-MOTOR1) 0,50m2 MAVİ (KNI.3-MOTOR2) 0,50m2 PEMBE (KNI.5-MOTOR3) 0,50m2 KIRMIZI (KNI.7-MOTOR4) 0,50m2 MOR (KNI.8-MOTOR5) 0,50m2 TURUNCU (KNI.4-MOTOR6) 0,50m2 YEŞİL (MOTORB-ISTITICI TOP.-TERMINAL TOP.) YEŞİL-SARI	(KNI.1-MOTOR1) 0,50m2 BROWN (KNI.3-MOTOR2) 0,50m2 PINK (KNI.5-MOTOR3) 0,50m2 RED (KNI.7-MOTOR4) 0,50m2 PURPLE (KNI.8-MOTOR5) 0,50m2 ORANGE (KNI.4-MOTOR6) 0,50m2 GREEN (MOTORB-HEATER QND-INT.SUPP.QND) GREEN-YELLOW	
3406	(KNS.7-MOTOR1) 0,50m2 BEYAZ (KNI.1-MOTOR2) 0,50m2 PEMBE (KNI.3-MOTOR3) 0,50m2 KIRMIZI (KNI.5-MOTOR4) 0,50m2 MOR (KNI.7-MOTOR5) 0,50m2 TURUNCU (KNI.4-MOTOR6) 0,50m2 YEŞİL (MOTORB-ISTITICI TOP.-TERMINAL TOP.) YEŞİL-SARI	(KNS.7-MOTOR1) 0,50m2 BROWN (KNI.1-MOTOR2) 0,50m2 PINK (KNI.3-MOTOR3) 0,50m2 RED (KNI.5-MOTOR4) 0,50m2 ORANGE (KNI.7-MOTOR5) 0,50m2 GREEN (KNI.4-MOTOR6) 0,50m2 GREEN (MOTORB-HEATER QND-INT.SUPP.QND) GREEN-YELLOW	

RESİM ÜZERİNDEKİ ÖLÇÜ ALMAYINIZ / DO NOT SCALE

CAD KONTROL

CAD İLE ÇİZİLMİŞTİR BELGE DEĞİŞTİRİLMİYİZ / CAD OUTPUT DO NOT HANDWORK

Tip Matzeme Renk Standart Ölçü

TARİH	TSİM
05.05.2008	ÖZLEM
05.05.2008	AYŞEGÜL
05.05.2008	TEZDÜYAR

MALZEME/MATERIAL

**arçelik**

**ANA KABLO GR.**  
MAIN CABLE HARNESS  
TRV0/V2/AN2/UB4-J411NOR-COMP.  
DIFFUSION/FUSION MINI LCD

RESİM NO: 287580XX100

ÖLÇEK: 1/10

YERİNE GEÇTİ

